

FX Cards

The Foreign Exchange Line Card (FX) is used in a number of unique situations.

2 to 4 wire converters

The 2 to 4 wire converters provide an interface between a 4 wire + E & M circuit and a 2 wire circuit.

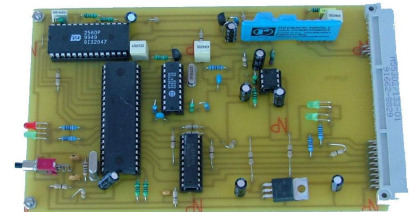
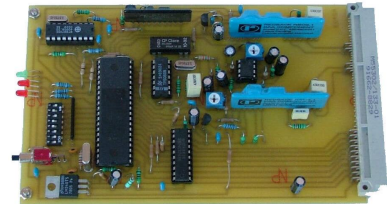
There are 2 types of converter:

- 4 wire to 2 wire Ring Down/ Loop Out (Type A)
- 4 wire to 2 wire loop In/Ring Out (Type B)
- 4 wire to 2 wire Ring Down/ Loop Out (Type C)
(with busy tone detection)

They require PABX battery and ground for Power and Signaling purposes.

Euro-Card 3U high x 160mm

(Diagram 1 shows the possible connections of these cards)



Voice Link C Adaptors (see diagram 2)

The Voice Link C adapter System is used to replace the expensive 4 wire E&M Tie Lines with the less expensive 2 line Tie line. This Adapter offers similar performance to the 4 wire E & M Tie Line with the same control over setup and clear-down of the connection.

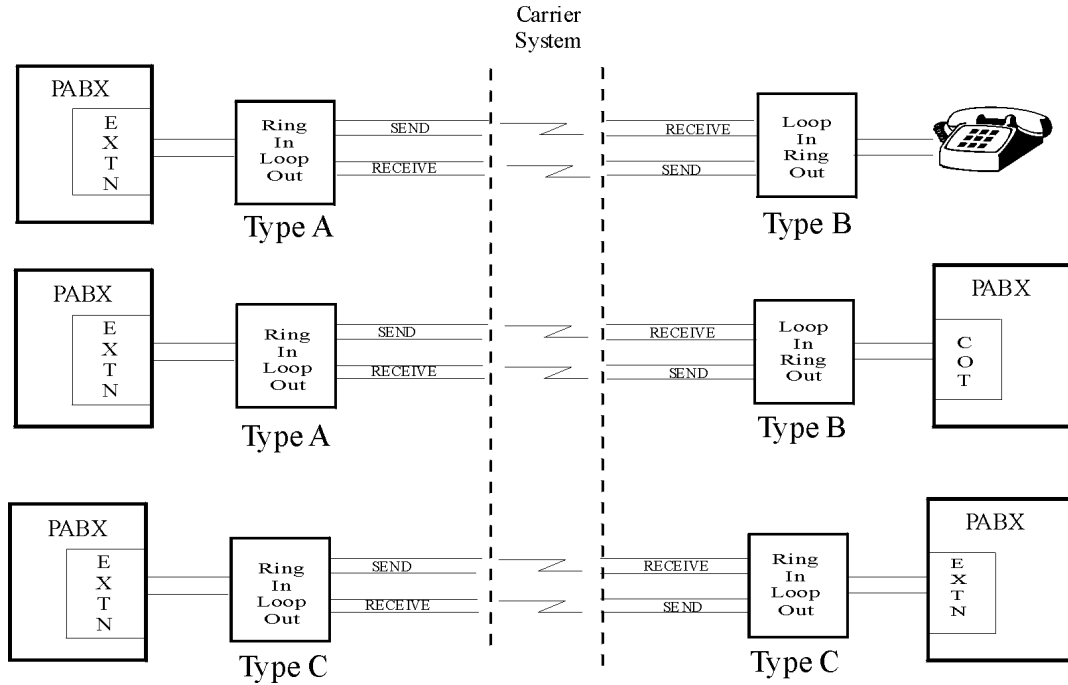
The Voice Link C Tie Line has a Loop In/Ring Out interface at the A end and a Loop Out/Ring In interface at the B end. The Adapter system has an A and B interface to connect to the Voice Link C Tie Line. The PABX side of each adapter has a 4 wire + E&M interface.

The A and B adapters communicate by unused DTMF signals.

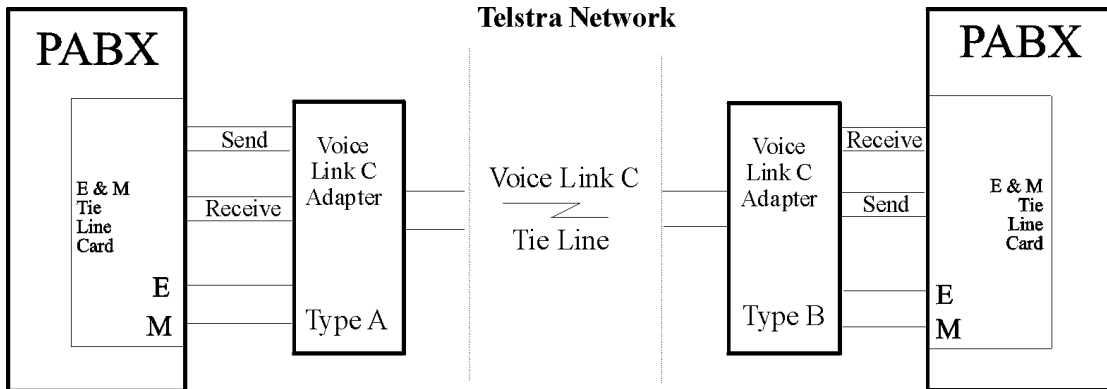
Exchange/Extension Line Extender (See Diagram 3)

This Euro-card circuit is used to isolate or extend an Exchange or Extension line. Many IP telephone systems have extension line circuits that have very low Loop Current voltage and low Ring Voltage. These circuits will interface to the extension circuit and provide boosted Ring Current and constant 30mA line current for external extensions. Isolation and Line Voltage protection is also provided.

2 to 4 Wire Converters (Diagram 1)



Voice link C (diagram 2)



Exchange Line Extender (Diagram 3)

